



WWF

REPORT

SG

2013



# ANNUAL REPORT

---

# 2013

# CHAIRMAN'S MESSAGE

---

As 2013 draws to a close we have witnessed the awful devastation wreaked by typhoon Haiyan (Yolanda) in central Philippines in November. There is good reason to believe that climate change may make such storms more powerful as the atmosphere gets warmer, and all of the models tell us that extreme and unpredictable weather events will become more and more common as a side-effect of global warming.

Just a week after this dramatic demonstration of the force of nature, and the fragility of our human lives, the world's Environment Ministers and other Government officials met at the 19th Conference of Parties to the Climate Change Convention in Warsaw. For nearly 20 years this multilateral process has been disappointing those of us concerned for the planet as talk overwhelms any real action. This year was no exception. The head of the Philippines delegation went on hunger strike during the conference to try and boost the courage of his fellow-delegates to take bold decisions. None were forthcoming, the meeting was so depressing that at one point WWF and other organisations lobbying for change staged a walk-out.

Usually the excuse for failure to change is: "we can't afford it", yet those same governments will pay the costs of human misery and economic damage caused by an increasingly unstable and unpredictable climate. The latest estimate of the bill in the Philippines is \$8.2 billion; the human costs incalculable.

We also feel the cost at home in Singapore. Floods become more frequent, hotter temperatures this year, and the record-breaking haze of mid-year showing that we are not immune from the effects of unsustainable consumption and climate change.

Whilst the negotiation processes let us down, the need to take action for our planet is clear and urgent. And in WWF-Singapore we can see members of the public and corporations of Singapore becoming more and more committed to take positive action for the environment irrespective of the political impasse that the climate faces. With your support WWF-Singapore is a part of global, regional and local initiatives which can make a positive difference.

## cont'd CHAIRMAN'S MESSAGE

---

Our schools outreach programmes are proving ever more popular and are catching the energy and imaginations of young people. Singapore is now the global base for Earth Hour and more than 5,000 people witnessed the switch-off and took part in activities in Marina Bay this year. Many companies, restaurants and hotels are joining our calls for no longer serving sharks fin and are participating in our Sustainable Seafood Campaign ("Help save the chilli crab"). People have listened and reacted to our campaign this year to halt the illegal trade in wildlife.

Thanks to the generosity of our regular supporters and major donors WWF-Singapore is now able to provide financial support to the WWF teams working on the ground in the Coral Triangle (part of which was badly damaged by Haiyan), and those working to stop further deforestation in the Heart of Borneo.

Although we are the youngest member of the WWF family we take great pride in being able to do our bit for these globally important initiatives. It is all due to your support and encouragement. I sincerely thank you all. But we need to do more, we need as many people on board as we can possibly find if we are to win the war on further declines of the only earth we have to live on. Only by all pulling together will we be able to leave our children, and our children's children, a Living Planet.

Thank you.

Dr Christopher Hails  
Board Chairman  
WWF-Singapore

# CEO'S MESSAGE

---

It's been another eventful year. The planet continues to remind us how urgent it is to maintain its health and our survival, while we gain ground on critical conservation issues. With a mission to create a future where people and nature can exist in harmony, we work towards raising public awareness on footprint and consumption issues, and how Singapore plays a part to secure the planet's future and our survival.

This year, Singapore joined the fight against global illegal wildlife trade, drawing an overwhelming wave of voices from all over the world to accelerate governmental action for stronger protection of sharks, turtles, elephants, rhinos and great apes, and a clampdown on domestic ivory trade in Thailand to put a dent into the decimation of elephants in South Africa.

For the first time, Singapore demonstrated that people power can be used to light up a brighter future for our planet. People danced on the kinetic pads and converted their energy into electricity to power up part of the Earth Hour Lights-Off@ Marina Bay. More than 5,000 people turned up at the event at the *Float@Marina Bay* to celebrate their commitment towards environmental conservation.

All these and more of WWF-Singapore activities have been detailed in the annual report, to give you a glimpse of our work in Singapore and where your contributions have made a difference for our environment.

The well-being of people, wildlife and the environment are inextricably linked. Because of that, the support of like-minded individuals, corporations and organisations, like yourselves, is key to initiate action for the environment. Every contribution will go a long way in protecting our natural environment and building a sustainable future for many generations to come.

We hope you will be inspired to act and encourage others to join us in protecting the only planet we have.

Elaine Tan  
Chief Executive Officer  
WWF-Singapore



# ROLE OF WWF-SINGAPORE

---

## Formation and Objectives

WWF incorporated its Singapore office on February 20, 2006, and was registered as a charity on March 10, 2006. The office is part of the WWF network, headquartered in Gland, Switzerland.

WWF-Singapore promotes interest in and awareness of critical conservation and footprint issues to the public and garners support for local, regional and global initiatives to protect, conserve and create a sustainable planet.

## Initiatives and Programmes

WWF-Singapore funds local, regional and global initiatives identified as priorities by WWF internationally. These include the conservation of priority areas such as the Coral Triangle and Heart of Borneo, as well as the protection of endangered species and habitats.

Our key conservation outcomes are reduction in the ecological footprint, the development of sustainable livelihoods for local communities; and the protection, restoration and conservation of species, habitats and eco-regions. We focus our efforts on awareness building through public education and campaigning, public advocacy and engagement with the local government and agencies on policy issues. We work simultaneously with corporations to inculcate sustainable business practices, to fulfil their corporate social responsibility for environmental conservation.

WWF-Singapore also manages the Conservation Fund, which is an Institution of a Public Character (IPC). The Conservation Fund supports Singapore-based activities, where the objective is to promote interest in and awareness of environmental conservation amongst the local community.

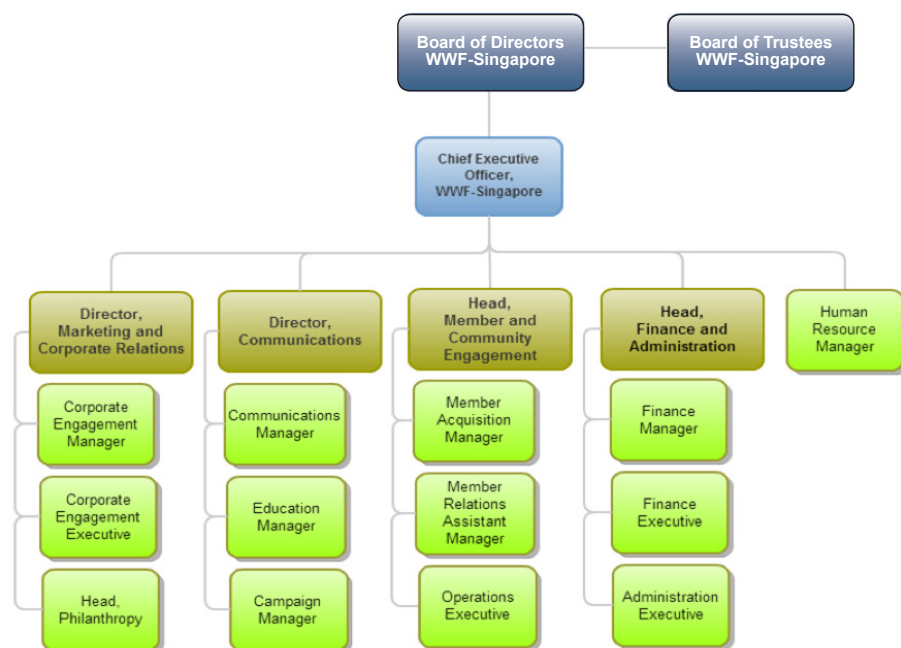
- Public awareness and behaviour change campaigns, such as sustainable seafood and Earth Hour
- School-based education programmes, such as the internationally-recognised Eco-Schools Programme
- Corporate outreach to drive market transformation and sustainable business practices

# GOVERNANCE

The Board of Directors (“BOD”) of WWF-Singapore, comprising seven members, is responsible for the management and strategic direction of the Charity. This includes putting in place the principles and practices of good governance in the organisation. The management of the Conservation Fund is regulated by a separate Board of Trustees (“BOT”), comprising three members.

## Organisational Structure

WWF-Singapore reports directly into WWF International in Gland, Switzerland. The Chief Executive Officer (CEO) is responsible for the day-to-day operations of the organisation and is supported by the team in Singapore.



## Board composition

The BOD and BOT are made up of individuals with diverse core competencies in areas such as conservation, accounting and finance, marketing and communication, management and law.

Board members have written Terms of Reference to assist them in fulfilling their fiduciary duties.

## Board of Directors



### **Dr Christopher John Hails** **Chairman of BOD & BOT, WWF-Singapore**

Dr. Chris Hails is a British biologist trained at the University of Stirling in Scotland. He worked as a lecturer in Zoology and Ecology at the University of Malaya in Kuala Lumpur from 1976 to 1983. From 1983 to 1988 he was an environmental advisor to the Ministry of National Development in Singapore.

He joined the WWF International headquarters in Switzerland in 1988 as Director of the Asia-Pacific Region, and was global Programme Director from 1995 until 2007. He now works in the Director-General's office where he is responsible for International Relations.



### **Soh Gim Teik** **Board Member | Audit Committee Chairman**

Soh Gim Teik is the Precedent Partner of Finix Corporate Advisory LLP and has more than 34 years of experience in corporate strategies and leadership, strategic management and finance. He is a member of the Institute of Certified Public Accountants of Singapore ('ICPAS') and a Fellow of the Singapore Institute of Directors ('SID') of which he is currently a board member. He was previously the Chairman of the CFO Committee of ICPAS, and a committee member of the Professional Accountants in Business Committee ('PAIB') of the International Federation of Accountants ('IFAC').



### **Chew Hai Chwee**

#### **Board Member**

Chew Hai Chwee had spent the last 27 years working for Asian and US multinationals with listing on the Singapore Exchange (SGX), NYSE and NASDAQ in USA where he was primarily responsible for various business functions and responsibilities including compliance, audit, mergers and acquisitions, corporate governance and international finance. He is also a Council Member and an audit committee member in Red Cross (Singapore) and sits on the Board of Directors of UNLV (University of Nevada Las Vegas) Singapore. Mr Chew also sits on the Board of Advisors of Kemin Asia Pacific. He was appointed in 2012 as a member of audit committee of Thye Hua Kwan.



### **Yvonne Choo**

#### **Board Member | Nominating Committee Chairperson**

Yvonne Choo has more than 30 years' experience in corporate secretarial practice including corporate governance. She has acted as Company Secretary and Advisor to the Boards of more than 50 companies listed on the Singapore Exchange Limited ("SGX"). Ms Choo is currently the Managing Director of KCS Singapore, a leading independent corporate services provider. Prior to joining KCS, she was the Managing Director of Boardroom Limited, a company listed on the SGX. Her career spans 24 years in Arthur Young, Ernst & Young and finally Boardroom Limited, leading the various business services practices of these organisations. Ms Choo is also a Fellow of the Singapore Institute of Directors and serves on its Governing Council as 2<sup>nd</sup> Vice Chairman.



### **Sudhanshu Sarronwala**

#### **Board Member**

Sudhanshu Sarronwala was a founder and Chief Executive Officer of Soundbuzz, Asia's leading digital music company. Currently, his role at the WWF International Secretariat in Gland, Switzerland includes brand, media and digital communications efforts to build a fair, sustainable and green economy globally.



### **Chan Ee Lin**

#### **Board Member | Remuneration Committee Chairperson**

Chan Ee Lin has over 23 years experience in the financial industry, and is an experienced trust and estate planner with wide Asia-Pacific expertise. She specialises in providing highly tailored multi-jurisdictional succession and estate planning solutions for high net worth individuals and their families, typically using structures such as trusts, charitable foundations, companies, partnerships, private trust companies and various bespoke insurance policies and wrappers.

Ms Chan is a full member of the Society for Trust and Estate Practitioners (STEP) and previously served on several sub-committees of STEP Singapore. She is the immediate Past President of the Financial Women's Association and still serves on the Board as Assistant Secretary.





### **Tan Chong Huat**

#### **Board Member**

Tan Chong Huat is the Managing Partner and one of the founding members of RHTLaw Taylor Wessing. He has extensive experience in corporate, banking and project finance law in Singapore and the region, and acted in numerous significant corporate transactions.

Mr Tan is also active in public service and charity work. He is currently a council member of the Football Association of Singapore and the Singapore Road Safety Council. He also sits as a Lay Person on the Institute of Singapore Chartered Accountants' Investigation and Disciplinary Panel. He was until recently a council member of the Corporate Governance Council set up by the Monetary Authority of Singapore.

## **Board of Trustees**



### **Goh Hwee Cheng**

#### **Board Member**

Goh Hwee Cheng has over 30 years' experience as a chartered accountant and chartered secretary and is the principal of a chartered and public accounting firm providing audit, tax and other accounting services.

Mdm Goh is a board member of several not-for-profit organisations including the Convent of the Holy Infant Jesus Schools' Board of Management and Singapore Gymnastics. She has been a Trustee for the WWF Conservation Fund since 2009.



### **Eileen Lee**

#### **Board Member**

Eileen is a Fellow member of The Chartered Association of Certified Accountants (UK) and a Certified Public Accountant (CPA) of Institute of Certified Public Accountants of Singapore.

She has almost 30 years of working experience in multinational companies, which specialised in electronic industries, manufacturing line and Network Date Centre Services industries with regional exposure.

Beside being a Trustee for WWF, Eileen is currently also a Grassroots Leader of Pasir Ris Elias Community Club.

## Fraud and corruption policy

WWF-Singapore has a fraud and corruption policy which reflects WWF's zero tolerance principle to fraud and corruption. This policy is designed to prevent, deter, detect and communicate potential fraud and corruption.

All employees and board members of WWF-Singapore are required to submit an annual conflict of interest declaration to ensure potential conflicts of interest are identified and managed.

## Audits

The financial statements of WWF-Singapore are audited by Deloitte and Touche LLP. The audited accounts of the organisation for the year ended 30 June 2013 are prepared in accordance to the provisions of the Singapore Companies Act, the Singapore Charities Act, Chapter 37 and Singapore Financial Reporting Standards.

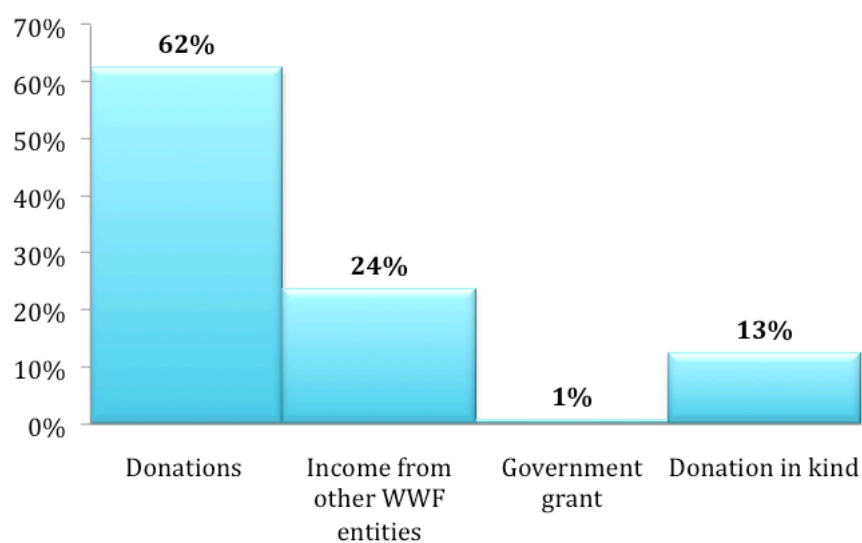
In addition to the annual statutory audit, WWF-Singapore also conducts independent internal audits which aim to improve the organisation's corporate governance and its internal controls and processes.

# FINANCIAL HIGHLIGHTS FOR FY2013

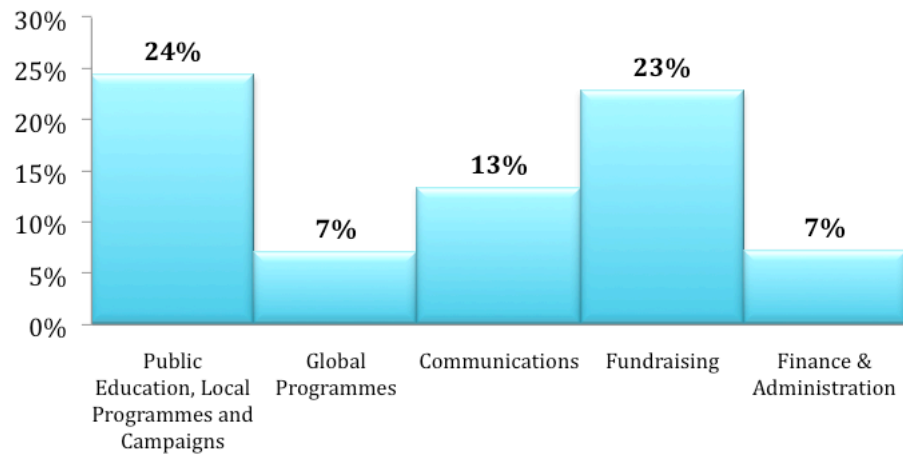
---

With the continuous support from individual supporters, corporate partners, government bodies and other stakeholders, WWF-Singapore is able to financially support our initiatives in Singapore and beyond.

## Income



## Expenditure



In FY2013, 24 percent of our total income were utilised for public education and campaigns such as Earth Hour, Sustainable Seafood and Illegal Wildlife Trade.

For the first time, WWF-Singapore was able to contribute to our regional and global programmes - Heart of Borneo, Coral Triangle and Earth Hour Global. Fundraising costs represent 23 percent of total income and the organisation's fundraising efficiency ratio remains in compliance with the local charity regulations.

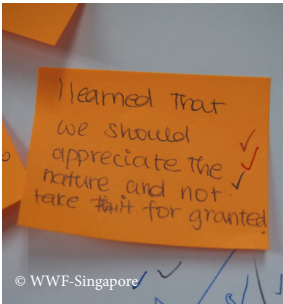
The organisation maintains unrestricted operating funds of approximately six months to ensure that the organisation's operational activities can continue even during a period of unforeseen economic downturn.

# EDUCATION

---

At WWF-Singapore, we believe that awareness and concern for our planet must be cultivated in young people. Schools, with their environment already established for learning, are a fertile ground for us to spread the word on environmental sustainability.

## Eco-Schools Programme



With the support of IKEA and the Silent Foundation, WWF-Singapore launched the pilot of the Eco-Schools Programme, an international environmental education and certification programme. Recognised by the United Nations Environment Programme as a model initiative, the holistic programme prompts participating schools to enhance their school-based curriculum for environmental education through a simple but established seven-step process. Through this process, WWF hopes to enable students to experience active citizenship and help them make environmental sustainability an integral part of school life.

Schools that successfully implement the programme and continuously improve their environmental performance are then awarded the internationally-recognised Green Flag status, putting them on the global map of schools that have achieved high standards in eco-practices in their immediate environment.

A total of eight primary and secondary schools are participating in the pilot. The programme will be further expanded and made available to all primary and secondary schools in 2014.

## Conservation-on-the-Move - mobile exhibition and assembly talks



WWF-Singapore also challenges students to become Planet Defenders with the Conservation-on-the-Move mobile initiative. Focused on forest and marine conservation issues in the Heart of Borneo and Coral Triangle, the programme consists of an assembly talk to the school, exhibition panels on the two topics, and a microsite that is accessed via QR codes on the exhibition panels.

This mobile initiative has travelled to 12 schools in FY2013. In addition, the exhibition was also displayed at the National Environment Agency's Clean and Green Week for schools.



# CAMPAIGNS

---

WWF aims to build a future in which humans live in harmony with nature. In so doing, we champion environmental issues in which Singapore has a key role to play.

## Earth Hour 2013



Leveraging its endearing theme of “I Will If You Will”, Earth Hour 2013 continued to spur businesses, schools, grassroots organisations and individuals to challenge one another to take on actions to save the planet, mobilising more than 450 organisations across the island to commit to one of four key actions for the environment: reduce use of plastic bags; turn up their air-conditioning by one degree; switch to energy-efficient LED light, and take short showers.



In line with the spirit of the global campaign to inspire simple yet long-lasting changes that can positively impact the planet, Earth Hour 2013 saw several long-term initiatives implemented, such as a “I Will if You Will” Challenge Week to kickstart a year-long recycling programme, a photo collage competition for staff to capture the essence of Earth Hour, the formation of a resident-led Environmental Sustainability Interest Group, encouraging customers to recycle plastic bottles in return for green products, and a weekly vegetarian day in school to reduce carbon footprint.

These activities culminated in the official Lights-Off ceremony on March 23, 2013 at the *Float@Marina Bay*, where the world’s largest grounds-up initiative for the environment gained a boost of people power from 2000 people busting their moves on energy absorbing pads to charge up the screening of Dr. Seuss’ *The Lorax*. More than 5000 people witnessed the dramatic switch-off of iconic structures forming the Singapore skyline, marking the country’s commitment towards a low carbon future for the planet.





## Sustainable Seafood

At 140,000 tonnes annually, Singapore is one of the largest seafood consumers in the world. Changes in our consumption methods can positively impact the world's fish stocks and the health of our oceans.

WWF-Singapore works closely with businesses and consumers to raise awareness and commitment to sustainable seafood. Since 2010, we called for action amongst hotels and restaurants to stop serving shark fin, as well as corporates to not serve shark fin at their business functions. This year, seafood products provider Golden Fresh joined the WWF-Singapore Sustainable Seafood Group, committing to replace overexploited with sustainably harvested alternatives. Grand Copthorne Waterfront Hotel also committed to completely removing shark fin from its menu, in support and protection of the overexploited shark species.

To date, the following organisations have pledged their commitment against shark fin consumption:

### Companies and organisations

- Aamor Pte Ltd
- ASM Front-End Manufacturing Singapore Pte Ltd
- British High Commission in Singapore
- Credit Suisse AG (Asia Pacific)
- Dentsu Mobius Pte. Ltd.
- Deutsche Bank
- Ere-S Pte. Ltd.
- ESSECAAsian Center
- EV World Pte Ltd
- Jebsen & Jessen Group of Companies South East Asia
- SingTel
- Systems on Silicon Manufacturing Co. Pte. Ltd. (SSMC)
- Vermont Woods Studio



### Hotels and Restaurants

- Fairmont Singapore
- Grand Copthorne Waterfront Hotel Singapore
- Shangri-La Singapore
- Shangri-La's Rasa Sentosa Resort
- Siloso Beach Resort
- Swissotel The Stamford
- The Fullerton Hotel
- Traders Hotel
- Xi Yan Private Dining

WWF-Singapore also continues to drive public awareness against shark fin consumption. A unique shark-fin free “No Fin” banquet card was developed and launched last year, provided free to consumers on request as they organise events and dinners without serving shark fin. Movie screenings and talks have also been held at various locations, such as Singapore Press Holdings and Keppel Corporation, to spread the word on sustainable seafood.



### Illegal Wildlife Trade

Wildlife trade and crime is big business – it is recognised as the fifth largest illegal trade, right behind drugs. Poaching is one of the biggest threats facing the survival of endangered species today. Rising affluence in Asia has resulted in an increase in Asian consumers with the means to purchase illegal products from highly threatened wildlife, such as tigers, elephants and rhinos.

WWF-Singapore and TRAFFIC Southeast Asia called for the Singapore public to make a pledge not to purchase or consume illegal wildlife products. The initiative is part of a joint global campaign by WWF and TRAFFIC calling for governments around the world to strengthen legislation and enforcement against illegal wildlife trade, and for consumers to play their part in reducing demand for illegal wildlife products.

In addition, WWF-Singapore and TRAFFIC Southeast Asia conducted a survey to understand ivory trade in Singapore, reporting far fewer shops offering ivory for sale compared to a decade ago. However, Singapore's trade network is believed to have been exploited by criminal groups in the illegal wildlife trade. A July 2012 report identified Singapore as a key laundering point for illegally caught birds from the Solomon Islands. Ivory continues to be seized by Singapore authorities – in January 2013, the Agri-Food and Veterinary Authority and Singapore Customs seized 1,099 pieces



of raw ivory tusks packed in 65 gunny sacks weighing close to two tonnes. The shipment, declared as 'waste paper' was seized coming from Africa.

WWF-Singapore and TRAFFIC Southeast Asia urged Singapore to play its part in prohibiting the illegal trade from passing through its seaports and airports, and calls for further investigations to ensure that seizures result in prosecutions, convictions and strong penalties to stop the flow of illicit ivory through transit ports.





# GLOBAL INITIATIVES

WWF started out as an organisation focused on the protection of single endangered animal species. This approach has since evolved into an ambitious strategy to preserve biodiversity and achieve sustainable development across the globe. Having invested well over US\$1 billion in more than 12,000 conservation initiatives since 1985 alone, WWF is continually working to bring a balance between our demands on our world, and the variety of life that creates our living planet.

Due to Singapore's strategic position in Asia Pacific, it focuses on the nearest priority places and most geographically relevant Global Initiatives.

## Earth Hour

After six years since its conceptualisation in Sydney, Australia, The Earth Hour team moved its global headquarters to Singapore in July 2012.

Earth Hour Global is proud to be the first worldwide grassroots campaign to base its operations in Singapore, with the location offering the connectivity and opportunity the movement needs to move forward. The move represents the next frontier of the campaign with Singapore acting as a gateway that bridges Southeast Asia, a growing community base to the rest of the world.

Supported by the Singapore Economic Development Board and WWF-Singapore, the new location has allowed the Earth Hour Global team to capitalise on the growth of the movement in Asia, with environmental outcomes, digital community growth and on-the-ground activities in the region setting a global benchmark for teams around the world.

Together with WWF-Singapore, Earth Hour Global is fortifying global partnerships from Singapore as a way of tapping into the world's largest population base, strengthening our efforts to connect individuals and communities to co-create a healthier and more sustainable world.





Since 2013, WWF-Singapore has partnered with corporate organisations for Earth Hour encouraging Singapore to make four lifestyle changes – reduce use of plastic bags, turn up their air-conditioning by one degree, switch to energy-efficient LED lights, and take short showers – in support of the global movement. This focus will be continued for 2014.



## Heart of Borneo

There is only one place remaining in Southeast Asia where tropical rainforests can still be conserved on a grand scale. Some of the most biologically diverse ecosystems on Earth are found in the tropical rainforests of Borneo.

There are few other places on Earth where you can see large, endangered animals such as orang-utans, elephants, leopards, bears and rhinos in the wild. Borneo has lured scientists for over 150 years, and has played a key role in the discovery of evolution. More than three species of flora and fauna, on average, have been discovered every month in the Heart of Borneo over the past 15 years



Today, the greatest threats to the Heart of Borneo are logging, land-clearing and conversion activities. The increase in these activities is being matched by a growth in illegal wildlife trade, as cleared forests provide easy access to more remote areas.

WWF works with the three Borneo nations – Brunei, Indonesia and Malaysia – to conserve 220,000 km<sup>2</sup> of rainforest - almost one-third of the island - through a network of protected areas and sustainably-managed forests, ensuring that the island's natural treasures are sustainably used, well into the future.



## Coral Triangle

The Coral Triangle covers a triangular-shaped area of six million km<sup>2</sup>, spanning six countries in the Asia-Pacific regions: Indonesia, Malaysia, the Philippines, Papua New Guinea, Timor Leste and the Solomon Islands. Well-known for its amazing collection of corals and for being the world's centre of marine diversity, the Coral Triangle is also commonly referred to as the nursery of the seas and is home to:

- 75% of the world's coral species, the highest coral diversity in the world.
- Six out of the seven sea turtle species in the world. Of those, two are critically endangered: the hawksbill and leatherback turtles.
- 37% of the world's coral reef fish species, more than anywhere else in the world.

An estimated 120 million people live within the Coral Triangle, of which approximately 2.25 million are fishermen who depend on healthy seas to make a living. Almost all of Singapore's seafood comes from the Coral Triangle.

WWF takes a multi-faceted approach towards protecting and maintaining the health of the Coral Triangle. This includes working with businesses and fishing communities to use sustainable fishing methods and reducing bycatch to lower the impact on non-targeted marine life; partnering governments to set up marine protected areas and allow critical fish populations to recover to a healthy state; and raising awareness amongst consumers to choose sustainable seafood.



# PUBLIC ENGAGEMENT EFFORTS

---

WWF-Singapore actively highlights the inextricable linkage between Singapore and the regional environment through roadshows, movie screenings and talks islandwide, encouraging the public to contribute towards conservation projects in Asia.

In FY2013, we focused our outreach efforts around the themes of carbon footprint with Earth Hour 2013; species protection through Illegal Wildlife Trade; and sustainable lifestyle with Sustainable Seafood. Each of these themes saw public engagement through interactive games, posters and information postcards, to bring their attention to environmental issues and what they can do to help. Experts from WWF's network are also regularly invited to Singapore to share their perspectives on critical conservation issues.



# GOING FORWARD

---

FY2014 is looking to be exciting. In the year ahead, we will be growing current campaigns and initiatives to reach more people, and also give attention to upcoming environmental issues affecting Singapore.



## Celebrating Sustainable Seafood With The Sustainable Seafood Festival

Public awareness on the situation of our seas and fish stocks is growing. As one of the biggest seafood consumers in the world, the time is right for Singapore as a nation to take a conscious, collective step to drive sustainable seafood as a real, viable choice for the Singapore public.

To this end, WWF-Singapore will be gathering the support of the industry, public and private partners to influence consumer behaviour and consumption pattern, through a week-long sustainable seafood festival. This initiative will bring on board some of Singapore's most popular restaurants, hotels and supermarkets to collectively raise awareness and promote sustainable seafood options to the general populace.

Together with our partners and the support of the community, we believe we will make greater progress towards making sustainable seafood the default choice in Singapore.

## Charting Solutions To Mitigate Haze In Asia Pacific

The haze is an annual occurrence for Singapore. However this year the situation has become increasingly dire. Air pollution levels in Singapore hit a new high and the number of hotspots in Indonesia increased as the dry season started and lasted.

The haze is a direct result of the effects of climate change and significant unsustainable business practices in the production of pulp and paper as well as palm oil. WWF-Singapore will be taking the lead to engage civic society, public and private organisations, and like-minded non-governmental organisations to discuss how risk factors contributing to forest fires and the haze can be actively mitigated.

## Corporate Information

### BOARD OF DIRECTORS

Dr Christopher John Hails (Chairman)  
Soh Gim Teik  
Chew Hai Chwee  
Yvonne Choo  
Chan Ee Lin  
Sudhanshu Sarronwala  
Tan Chong Huat

### BOARD OF TRUSTEES

Dr Christopher John Hails (Chairman)  
Goh Hwee Cheng  
Eileen Lee

### AUDIT COMMITTEE

Soh Gim Teik (Chairman)  
Chew Hai Chwee  
Yvonne Choo

### NOMINATING COMMITTEE

Yvonne Choo (Chairperson)  
Chew Hai Chwee  
Soh Gim Teik

### REMUNERATION COMMITTEE

Chan Ee Lin (Chairperson)  
Sudhanshu Sarronwala  
Tan Chong Huat

### COMPANY SECRETARY

Gwendolin Lee

### REGISTERED OFFICE / BUSINESS OFFICE

354 Tanglin Road #02-11  
Tanglin International Centre  
Singapore 247672  
Tel: +65 6730 8100  
Fax: +65 6730 8122

### AUDITORS

Deloitte & Touche LLP  
6 Shenton Way  
Tower Two #32-00  
Singapore 068809

### AUDIT PARTNER-IN-CHARGE

Lee Boon Teck  
Appointed wef financial year 2012



## WWF Offices

### WWF Offices

Armenia  
Azerbaijan  
Australia  
Austria  
Belgium  
Belize  
Bhutan  
Bolivia  
Brazil  
Bulgaria  
Cambodia  
Cameroon  
Canada  
Cape Verde  
Central African  
Republic  
Chile  
China  
Colombia  
Costa Rica  
D.R. of Congo  
Denmark  
Ecuador  
Finland  
Fiji  
France  
Gabon  
Gambia  
Georgia  
Germany  
Ghana  
Greece  
Guatemala  
Guyana  
Honduras

Hong Kong  
Hungary  
India  
Indonesia  
Italy  
Japan  
Kenya  
Laos  
Madagascar  
Malaysia  
Mauritania  
Mexico  
Mongolia  
Mozambique  
Namibia  
Nepal  
Netherlands  
New Zealand  
Niger  
Norway  
Pakistan  
Panama  
Papua New Guinea  
Paraguay  
Peru  
Philippines  
Poland  
Romania  
Russia  
Senegal  
Singapore  
Solomon Islands  
South Africa  
Spain  
Suriname  
Sweden  
Switzerland  
Tanzania  
Thailand  
Tunisia

Turkey  
Uganda  
United Arab Emirates  
United Kingdom  
United States of  
America  
Vietnam  
Zambia  
Zimbabwe

### WWF Associates

Fundación Vida  
Silvestre (Argentina)  
Fundación Natura  
(Ecuador)  
Pasaules Dabas Fonds  
(Latvia)  
Nigerian Conservation  
Foundation (Nigeria)

# WWF (World Wide Fund for Nature)

**+100**

WWF is in over 100 countries, on 6 continents

**1961**

WWF was founded in 1961



**+5M**

WWF has over 5 million supporters

**+6000**

WWF has over 6,000 staff worldwide



## Why we are here

To stop the degradation of the planet's natural environment and to build a future in which humans live in harmony with nature.

[www.wwf.sg](http://www.wwf.sg)

© 1986 Panda symbol WWF-World Wide Fund For Nature (also known as World Wildlife Fund)  
 ® "WWF" is a WWF Registered Trademark

World Wide Fund for Nature (Singapore) Limited  
 354 Tanglin Road, Tanglin Block, #02-11 Tanglin International Centre, Singapore 247672  
 Tel: +65 6730 8100 Fax: +65 6730 8122. For contact details and further information,  
 please visit our website at [www.wwf.sg](http://www.wwf.sg)